



INDUSTRIAL MAGZA
DIST. AUTORIZADO

MEX (55) 53 63 23 31 MTY (81) 83 54 10 18
QRO (442) 1 95 72 60 ventas@industrialmagza.com

Food Duty MGS[®] Speed Reducers

**The Most Reliable Drive Solution for Your
Demanding Applications!**



**1 Hour
QUOTE**

"We don't say we're best...our customers do"

**4 DAY
FOOD DUTY
DELIVERY**



www.stober.com

The STOBER difference = VALUE for you!

5 YEAR WARRANTY Optional

Maintenance Free Long Life

- Improved Input Design
- SHC630 Synthetic Oil



Stainless Steel Oil Fill Plug

NEMA C-face Input Adapter with O-Ring

Flexible Input Coupling

Gears Supported with dual bearings in one piece housing for structural rigidity

Magnetic Drain Plugs

Dual Output Seals



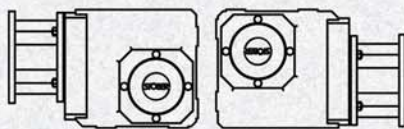
Uses the patented stainless steel double wobble-free bushing system for easy installation.

Bushing covers, with weep holes, protect seals against high pressure washing.

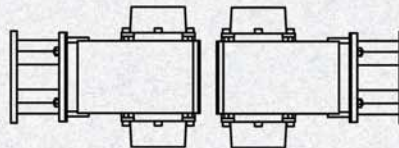


Standard Bushing Bore Sizes	
WFB1	1, 25mm
WFB2	1-1 ³ / ₁₆ , 30mm
WFB3	1-1 ¹ / ₂ , 30, 35mm
WFB4	1-1 ¹ / ₂ , 40mm
WFB5	1 ⁷ / ₁₆ - 2, 40mm
WFB6	1 ⁷ / ₁₆ - 2 ³ / ₁₆ , 40mm
WFB7	1 ¹⁵ / ₁₆ - 2 ³ / ₈
WFB8	2 ³ / ₁₆ - 2 ³ / ₄

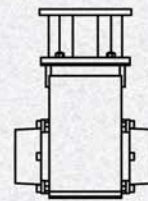
Designed for application specific mounting position.



E12

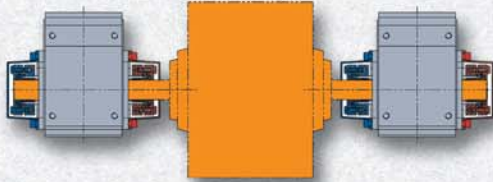


E34



EL5

Double bushing mounts from either side.

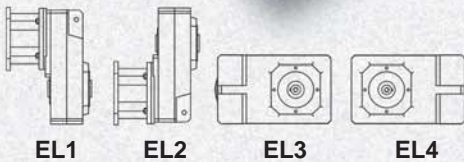
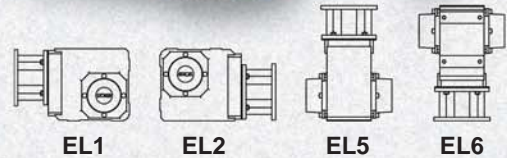


3 YEAR WARRANTY
 Standard

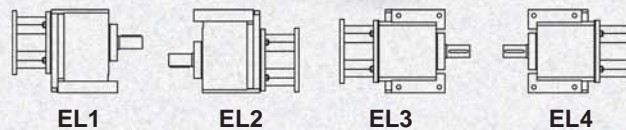
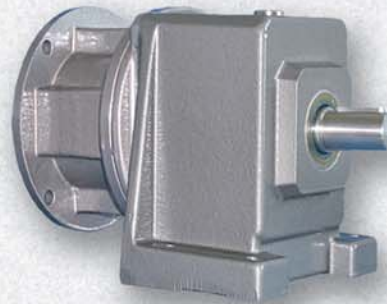
Standard "K" Series Food Duty with double wobble free bushing.



Standard "F" Series Food Duty with hollow output



Standard "C" Series Food Duty



Long Life Part No. Example:

K302WG0100MR160/140FLL WFB3-108 EL12

- **K302** – Right Angle (**K**), Unit Size **3, 02** – Double Reduction
- **W** – Wobble Free Bushing
- **G** – Tapped Holes Housing
- **0100** – Ratio 0100 (10:1)
- **MR160/140** – Motor Adapter Size for NEMA 143/145TC
- **F** – Food Duty Paint
- **LL** – Long Life (5 Year Warranty)
- **WFB3-108** – 1½ bore bushing
- **EL12** – Mounting Position **MUST BE SPECIFIED**

Standard 3 Year Part No. Example:

K302WG0100MR160/140F WFB3-108

- **K302** – Right Angle (**K**), Unit Size **3, 02** – Double Reduction
- **W** – Wobble Free Bushing
- **G** – Tapped Holes Housing
- **0100** – Ratio 0100 (10:1)
- **MR160/140** – Motor Adapter Size for NEMA 143/145TC
- **F** – Food Duty Paint
- **WFB3** – Bushing Part No. Size 3 to match Unit Size
- **108** – 1½ (1 and ⅞) Bore Bushing

STOBER Drives Inc.
Maysville KY



MGS® Speed Reducers



**ServoFit® Modular System
Gearheads**



**ComTrac® Mechanical
Variable Speed Drives**



ServoFit® Geared Motor



STÖBER Antriebstechnik GmbH + Co. KG
Pforzheim Germany



ServoFit® Planetary Gearheads

STOBER Drives, Inc.
1781 Downing Drive, Maysville KY 41056
Phone: 606 759-5090, FAX: 606 759-5045, Toll Free: 800 711-3588
Web: www.stober.com, E-mail: sales@stober.com

MGS®, STOBER®, ComTrac®, and ServoFit® are registered trademarks of STOBER Drives, Inc.
Form No. 3030, Copyright March 2009, Printed in U.S.A.

